

Generac 19,000kW Isuzu Engine Diesel Generator (MLG201F4-STD)



Tough and Durable

Full tubular steel frame, lockable enclosure

Durable, fade resistant, baked on white powder coat finish

Stainless steel hinges, exterior hardware and pad lockable door latches



The Generac 19,000kW Isuzu Engine Diesel Generator provides affordable, single phase power with just the right combination of hardworking output and efficiency. It is built to perform in the most rugged environments and bring up to 20,000kW to power tools and equipment on site. And because it's a Generac generator it carries a 2 year (2,000 hour) warranty and it is CSA certified. This model is available with a wide variety of options.



Proven Reliability

CSA Certified

Automatic low oil level / high temp shut down alerts

70A main breaker

2 year - 2,000 hour warranty

Marathon voltage regulation within +/- 1%

ENGINE

- Isuzu® 4LE2TAGV-03- liquid cooled, diesel engine
 - Standby-40.2hp@1800rpm
 - Prime-36.2hp@1800rpm
 - 4 cylinder
 - 2.2L displacement
 - FinalTier4Approved
- Polyethylene fuel tank
 - 50gal.(189L)capacity
 - 23.8hr.runtime-fullload
 - 3.5in. (89mm)fillport
- Fuel consumption (prime) – 2.1 gph (7.8 Lph)
 - 100%-2.1gph(7.8Lph)
 - 75%-1.58gph(5.98Lph)
 - 50%-1.05gph(3.97Lph)
- Cooling system capable of operating at 120°F (49°C) ambient
- Rubber vibration dampers isolate engine/generator from frame
- Full flow oil filter, spin on type
- Fuel filter with replaceable element
- Dry type cartridge air filter
- 60 Hz engine/generator

GENERATOR

- Marathon Electric®
Brushless
4 pole
Class H insulation

SYSTEM OUTPUTS

- Single phase output
 - Prime-19kW/19kVA(79A@240V)
 - Standby - 20 kW / 20 kVA (83A @ 240V)
- 120/240 VAC – 167/83A
- Voltage regulation +/- 1% with Marathon

ELECTRICAL CONTROLS

- 100A start limit breaker (assures no load condition exists before starting)
- Convenience receptacles with individual breakers
 - (2)120V20 Amp GFCI duplex outlets (NEMA5-20Rtype)
 - (2) 240V30 Amp Twistlock outlets(NEMAL6-30 Rtype)
 - (2) 240V50 Amp Twistlock outlets (Non-NEMA 6369)
- 720CCA wet cell battery



Easy-to-use

Self-priming 4 cylinder Isuzu engine

External convenience outlets with individual breakers

External emergency stop switch

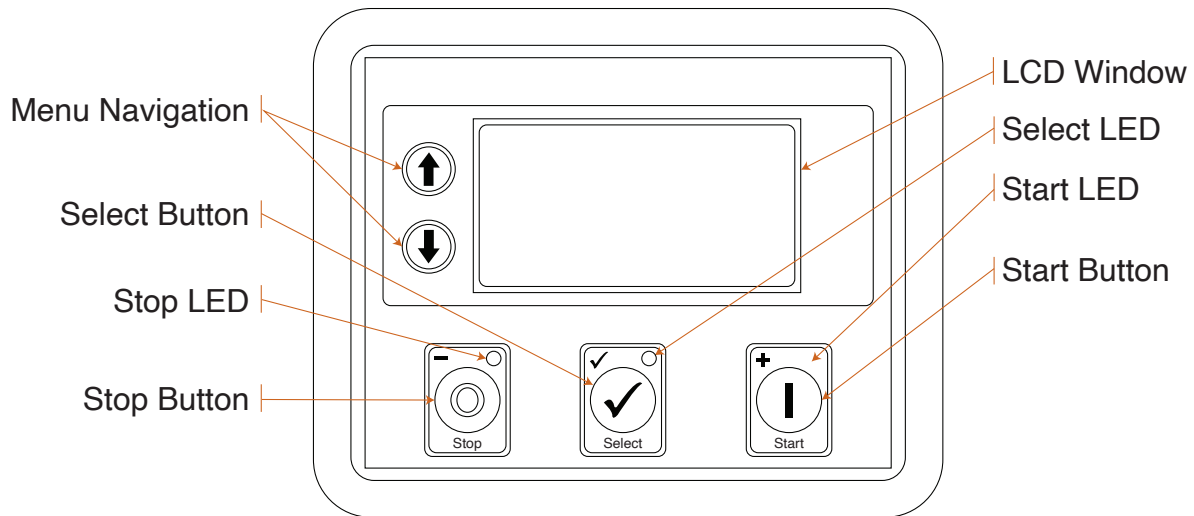
Next page >

Generac 19,000kW Isuzu Engine Diesel Generator (MLG201F4-STD)

Continued

SYSTEM CONTROLS

Monitor engine status, alarms, maintenance and auto start or manual operation.



TRAILER

- DOT approved tail, side, brake, and directional lights; recessed rear lights
- Transportation tie downs
- 7,800 lb. (3538 kg) sSafety chains with spring loaded safety hooks
- Single wall polyethylene fenders
- 2 in. (50.8 mm) ball hitch
- 2200 lb. (998 kg) leaf spring axle
- 2000 lb. (907 kg) tongue jack with footplate
- ST205/75R15 - 6 ply
- 58 in. (1473 mm) track width

ENCLOSURE

- Steel, 14-gauge, sound attenuated enclosure
 - UV & fade resistant, high temperature cured, white polyester powder paint
 - Insulated and baffled
 - 70 dB(A) at 23 ft. (7 m) – prime power
- Fully lockable enclosure
- Stainless steel hinges, door latches and exterior hardware
- Emergency stop switch located on front panel
- License plate holder with light
- Multi-lingual operating/safety decals
- Document holder with operating manual including AC/DC wiring diagrams

Generac 19,000kW Isuzu Engine Diesel Generator (MLG201F4-STD)

Continued

WEIGHT AND DIMENSIONS

- Dry weight: 1471 lbs. (667 kg)
- Operating weight: 1761 lbs. (799 kg)
- 105 x 68 x 56 in. (2.67 x 1.73 x 1.42 m)

WARRANTY / CERTIFICATION

- 2 year warranty (2000 Hours)
- CSA Certified

OPTIONS

Engine

- Positive Air Shutoff (electronic)
- 10 Amp Battery Charger
- Lockable Battery Disconnect
- AGM Sealed Battery - 720 CCA

Trailer

- 2" Ball / 2 1/2" Ring Combination Hitch
- 2" Bulldog Hitch
- 2 5/16 Ball Hitch
- 3' Lunette Ring
- Spare Tire and Carrier
- Adapter - Flat 4 to 7 Spade Round
- Rear Stabilizer Jacks

Cold Climate

- Liquid Containment / Quiet Pack
- 60/40 Coolant - 60% Ethylene Glycol
- Lower Radiator Hose - Engine Heater
- Heated Fuel Filter (Dual)

Cabinet

- 5 lb. Fire Extinguisher

Storage

- Toolbox, Black Poly 49x15x18.5 (LxWxH)
- Toolbox, Aluminum 49x15x18.5 (LxWxH)

LoJack

- Vehicle Recovery System