

Kappler ProVent Wrap-around Gown

Excellent Hazard Protection | Breathable | Comfortable

Kappler ProVent Wrap-around Gowns offer excellent general hazard protection in a breathable, microporous fabric engineered for enhanced comfort. Good against particle hazards and light splash situations, ProVent also passes the ASTM F1670 blood penetration test. From maintenance work to spray painting to general healthcare, ProVent Wrap-around Gowns made by Kappler offers quality you can depend on. Three configurations to choose from plus detached boot covers. [Contact us for special discount pricing.](#)



*Front & Back of
KAP-PVS101*



*Detail of Hook
& Loop Neck
KAP-PVS101*



*Knee-high
Shoe/Boot Cover
KAP-PVN023*

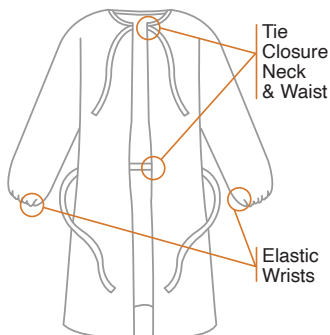
Specifications

Physical Property	Test Method	Results Imperial	Results Metric
Basis Weight	ASTM D751	1.6 oz/yd ²	55 g/m ²
Grab Tensile Strength	ASTM D751	MD 27 lbs CD 23 lbs	MD 120 N CD 102 N
Trapezoid Tear	ASTM D5733	MD 12.5 lbs CD 8 lbs	MD 55.5 N CD 35.5 N
Ball Burst	ASTM D3787	45 lbs	200 N
Hydrostatic Resistance	ASTM D751, Procedure B, 1	127 cm+	127 cm+
Moisture Vapor Transmission Rate	ASTM E-96 Method B	862 g/m ² /24hrs	862 g/m ² /24hrs

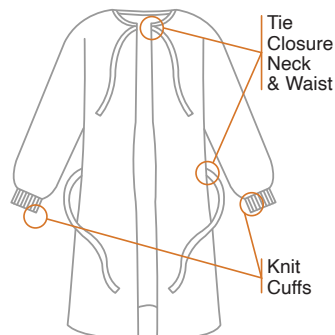
Kappler ProVent Wrap-around Gown

Excellent Hazard Protection | Breathable | Comfortable

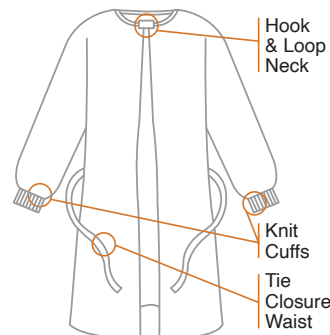
Three (3) Configurations plus Detached Boot Covers



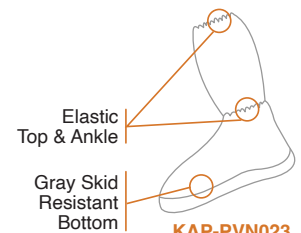
KAP-PVS112



KAP-PVS112-2H



KAP-PVS101



KAP-PVN023

Item #	KAP-PVS112	KAP-PVS1122H	KAP-PVS101	KAP-PVN023
Features	<ul style="list-style-type: none"> • Tie closure neck • Tie closure waist • Elastic wrists • Non-sterile 	<ul style="list-style-type: none"> • Tie closure neck • Tie closure waist • Knit cuffs • Non-sterile 	<ul style="list-style-type: none"> • Hook & loop neck • Tie closure waist • Knit cuffs • Non-sterile 	<ul style="list-style-type: none"> • Elastic top • Elastic ankle • Gray skid resistant bottom
Seam Type	Serged seams	Serged seams	Serged seams	Ultrasonic seams
Color	White	White	White	White
Case Quantity	30	30	30	50
Case Weight	20 lbs / 9.07 kg	15lbs / 6.8 kg	20lbs / 9.07kg	15lbs / 6.8 kg

What are Serged Seams?



Produced when three (3) threads are interlocked around the edges of the two pieces of fabric. For particulates plus residual liquids to light splash when no skin hazard is involved.

What are Ultrasonic Seams?



Two (2) fabric pieces are ultrasonically welded to create a seam with no needle holes. For particulates and light to moderate liquid splash.